

Quick start guide



Candela HQ

Frihamngatan 25
115 56 Stockholm
Sweden

Candela US

1750 Bridgeway
94965 Sausalito
California
United States

Support

service@candela.com
+46 8124 485 85

C-8



Safety

DANGER

Risk of life-threatening electrical shock.

All high-voltage parts are marked with yellow labels.

- Do not open the battery compartment.
- Do not perform any work on a high-voltage battery.

WARNING

Fire on the boat.

If a fire reaches the high-voltage battery, it can result in an explosion.

- Evacuate immediately if risk of a high-voltage battery catching fire. Inform the fire prevention service.
- If the fire is confined and not near the high-voltage battery, use the fire extinguisher.
- Do not use a defective battery. If you notice any damage to the battery after delivery, do not put the boat into operation.

WARNING

Risk of personal injury.

The behavior of a foiling boat is different compared to a planing boat. Incorrect handling of the boat when foiling can result in the craft landing on its side.

- Before welcoming any passengers onboard, ensure that you obtain sufficient operating experience of the boat.
- When underway, always use the seat belts.
- When applying Foiling mode, mind the descending struts.
- When preparing for takeoff, ensure that you have an obstacle free view of 250 meters.
- When foiling, avoid making sharp turns at high speed or in waves. Meet waves perpendicularly. The front wing should never be visible above the surface.
- A rotating propeller can cause serious injury or death. Turn off the motor when near someone in the water.

CAUTION

Electrical hazard.

- Be careful not to squeeze the charging cord.
- Be careful not to drop the charging cord into the water.
- Never pull the motor cable of the rudder.

About C-8

The driving modes

Harbor mode (A). Apply when moored and ashore. The entire foil system is retracted above the waterline. Algae growth on the foil system can seriously affect craft efficiency and range.

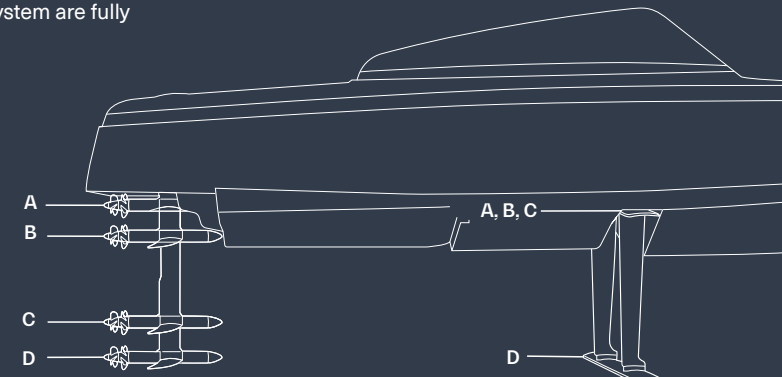
Shallow mode (B). Apply at low speeds only. The aft foil system is lowered into the water, just above the keel line. The throttle and steering ability are limited in shallow mode.

Planing mode (C). Apply in rough seas and for speeds up to 14kn. Reduced range. The aft foil system is further lowered into the water.

Foiling mode (D). Can be applied for all speeds, but foiling starts at about 17kn. Highest efficiency, longest range. The aft foil system and front foil system are fully extended.

Technical data

Maximum no. of passengers	8
Optimized speed for foiling	22kn
Top speed	27kn

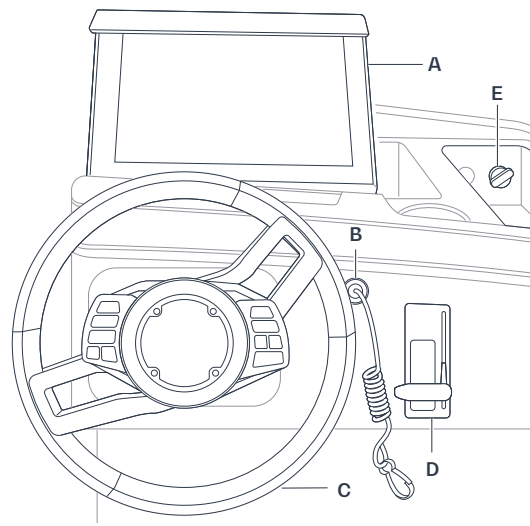


Handling the C-8

Charging

Note! Candela assumes no responsibility or liability for any damages caused by charging in an outlet not corresponding to the amperage of the boat.

1. Inform yourself of the maximum amperage of the dock outlet.
2. On the touchscreen, press charging (L) and set the charging current to match the dock outlet amperage. For example: If the dock outlet is capable of 16A, select 16A or slightly under.
3. Locate the charging cord under the sunbed. Elevate the sunbed by turning its handle.
4. Connect the charging cord to the charging port of the boat.
5. Place the cord in the slot of the storage compartment. Connect the charging cord to the dock outlet. Charging starts. On the touchscreen, the state of charge is indicated (C).
6. When charging is done, disconnect the charging cord from the charging port of the boat and then from the dock outlet.
7. Stow and secure the charging cord.



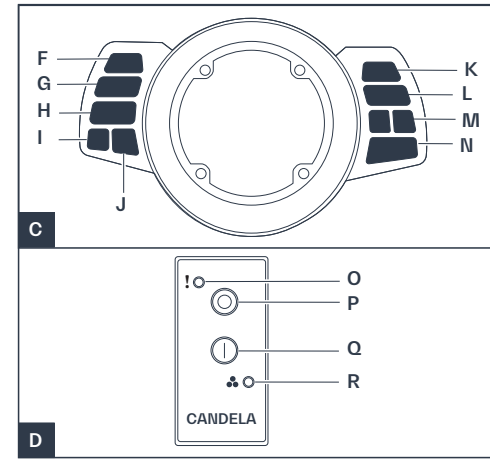
Before leaving harbor

Always do the following before leaving harbor:

- Ensure that the charge level is enough for the route that you are planning.
- Before a longer trip, listen to the long-term weather forecast.
- Ensure to carry necessary equipment.
- Ensure that the bilge pumps function.
- Ensure that the swim ladder is retracted.

The throttle

The throttle (D) has a stepless speed change mechanism and three notches: neutral, idle forward (up), and idle backward (down).



Starting

1. At the driver's seat, insert the key (E) and unlock. A start tone is heard.
2. On the touchscreen, select retraction (K) and press preferred mode until the foils are extended.
3. Secure yourself to the kill cord.
4. To activate the throttle, press the start button (Q). A start tone is heard and the propeller LED (R) is turned on. You are ready to go.

Shutting down

1. Slow down and press the stop button (P). The throttle is deactivated and propeller LED (R) is turned off.
2. Turn the key (E) to locked position.

The driver's seat

- | | |
|--------------------------------|-----------------------|
| A. Touchscreen | J. Man overboard |
| B. Kill cord | K. Menu |
| C. Steering wheel | L. Up/down/zoom |
| D. Throttle | M. Return |
| E. Key | N. Retraction up/down |
| F. Autopilot | O. Error LED |
| G. Volume up/down | P. Stop button |
| H. Play/pause and touch on/off | Q. Start button |
| I. Wipers | R. Propeller LED |

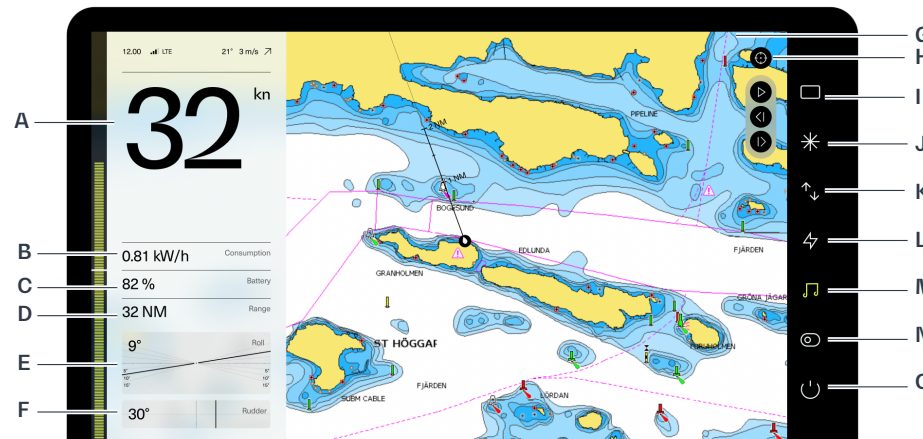
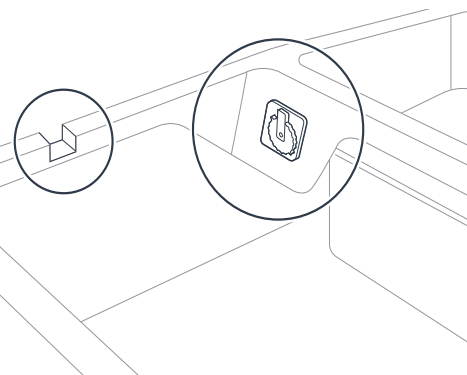
Start foiling

1. Put on the seat belts and tighten them.
2. On the touchscreen, select retraction (K) and press Foiling mode until the foils are fully extended.
3. Prepare for takeoff. Make a visual check of the sea ahead. You should have an obstacle free view of 250 meters.
4. Aim for a straight course and give full throttle. The boat will start foiling at about 17kn. Optimum foiling speed is 22kn.

Landing

1. Decrease speed. The boat will land at about 17kn.

Location of charging port



The touch screen

- | | |
|-----------------------|------------------------|
| A. Speed | H. Center the map |
| B. Energy consumption | I. Display settings |
| C. State of charge | J. Steering settings |
| D. Range | K. Retraction settings |
| E. Roll angle | L. Charging settings |
| F. Rudder angle | M. Audio settings |
| G. Nautical chart | N. Output settings |
| | O. System settings |